

NORTH ELEVATION - MATERIALS		
MATERIAL TYPE	AREA	PERCENTAGE
CEMENTITIOUS SIDING	649 SF	18%
CEMENTITIOUS TRIM	22 SF	1%
GLAZING	550 SF	15%
PRE-FINISHED METAL	97 SF	3%
STUCCO	2,363 SF	64%
	3,681 SF	100%

EAST ELEVATION - MATERIALS		
MATERIAL TYPE	AREA	PERCENTAGE
CEDAR SIDING	104 SF	8%
CEMENTITIOUS SIDING	321 SF	25%
CEMENTITIOUS TRIM	56 SF	4%
GLAZING	260 SF	20%
PRE-FINISHED METAL	17 SF	1%
STUCCO	528 SF	41%
	1,286 SF	100%

EAST ELEVATION LEVEL 1 GLAZING - CALCULATED BETWEEN 1'-0 AND 10'-0"		
OVERALL WALL	252 SF	
GLAZING REQUIRED	50.7 SF - 20.0%	
GLAZING PROVIDED	74.8 SF - 30.0%	

SOUTH ELEVATION - MATERIALS		
MATERIAL TYPE	AREA	PERCENTAGE
CEDAR SIDING	23 SF	1%
CEMENTITIOUS SIDING	784 SF	21%
CEMENTITIOUS TRIM	29 SF	1%
GLAZING	548 SF	15%
PRE-FINISHED METAL	93 SF	2%
STUCCO	2,243 SF	60%
	3,719 SF	100%

WEST ELEVATION - MATERIALS		
MATERIAL TYPE	AREA	PERCENTAGE
CEMENTITIOUS SIDING	332 SF	26%
GLAZING	260 SF	20%
PRE-FINISHED METAL	24 SF	2%
STUCCO	670 SF	52%
	1,286 SF	100%

WEST ELEVATION LEVEL 1 GLAZING - CALCULATED BETWEEN 1'-0 AND 10'-0"		
OVERALL WALL	252 SF	
GLAZING REQUIRED	50.6 SF - 20.0%	
GLAZING PROVIDED	74.8 SF - 30.0%	



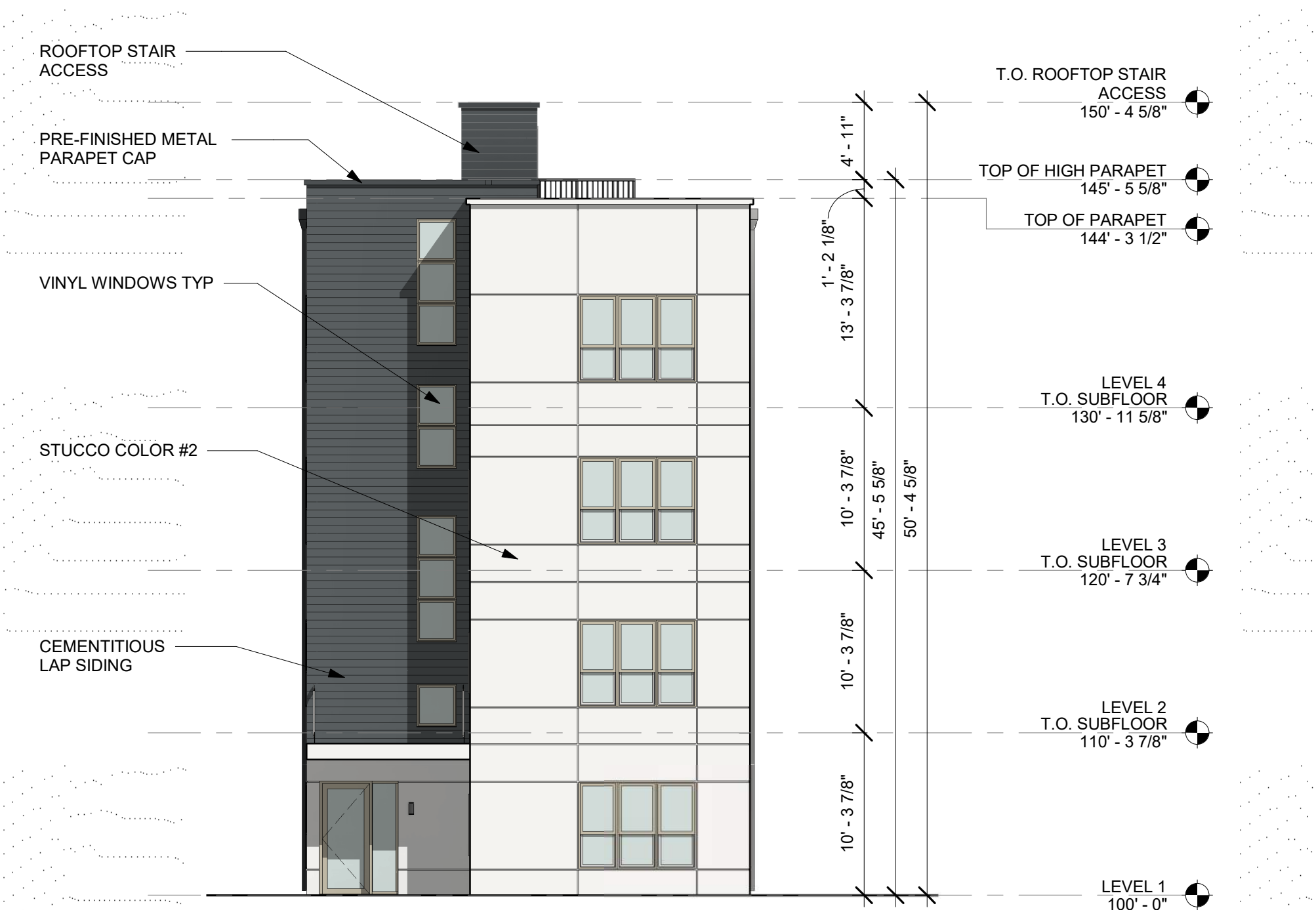
EXTERIOR ELEVATION - NORTH



EXTERIOR ELEVATION - EAST (FREMONT AVE)



EXTERIOR ELEVATION - SOUTH



EXTERIOR ELEVATION - WEST (ALLEY)



LAND USE APPLICATION

05.01.2019

2812 FREMONT APARTMENTS

Minneapolis, Minnesota

19-010.00

005
Exterior Elevations